



*Leading Railcar Mobility Since 1948*

**Maximum Tractive Effort**

**Double Coupled\*** 42,689 - 44,850 lbs. [19,363 - 20,344 kg]  
**Single Coupled\*** 27,014 - 28,515 lbs. [12,253 - 12,934 kg]

**Dimensions / Performance**

	<b>On Rail</b>	<b>On Road</b>
<b>Wheel Base</b>	121.0" [3,792 mm]	82.5" [2,096 mm]
<b>Rail &amp; Road Clearance</b>	3.5" [88.9 mm]	6.5" [165.1 mm]
<b>Rail &amp; Road Height ***</b>	141.8" [3,601.7 mm]	152.8" [3,881 mm]
<b>Length</b>	151.5" [3,848.1 mm]	
<b>Width</b>	122.5" [3,111.5 mm]	
<b>Non-Bal/Balstd Weight</b>	34,360 - 36,800 lbs. [15,585 - 16,692 kg]	
<b>Rail Gauge **</b>	AAR Standard 56.5" [1,435 mm]	
<b>Centerline to Cab Side</b>	63.47" [1,612.14 mm]	
<b>Centerline to Non-Cab Side</b>	59.03" [1,499.36 mm]	
<b>Cab Interior Cubic Feet<sup>3</sup></b>	150 cu. ft.	

**Road Turning Radius**

**Inside Tire** 13' 10" [4.0 m]  
**Outside Tire** 21' 5" [6.5 m]  
**Outside Clearance** 23' 6" [7.2 m]

**Speeds (Forward & Reverse)\*\*\*\***

<b>Low</b>	2.4 MPH, [3.9 km/h]	1.5 MPH, [2.4 km/h]
<b>2nd Gear</b>	4.0 MPH, [6.4 km/h]	2.5 MPH, [4.0 km/h]
<b>3rd Gear</b>	8.0 MPH, [12.8 km/h]	5.1 MPH, [8.2 km/h]
<b>4th Gear</b>	13.6 MPH, [21.9 km/h]	8.7 MPH, [14.0 km/h]

**Engine**

Cummins Electronic Turbo-Charged Diesel Engine  
 Meets EPA Tier IV Final and EU Stage IV Emissions  
 Meets EPA Tier III EU Stage III A Emissions Configuration  
 Valves per Cylinder 4  
 Engine Displacement Tier III & Tier IV 275 In<sup>3</sup> [4.5 liters]  
 Horsepower Tier III & Tier IV 130hp [97 kW] @ 2500 rpm  
 Maximum Torque Tier III 459lb-ft [622 N-m] @ 1500 rpm  
 Maximum Torque Tier IV 457lb-ft [620 N-m] @ 1500 rpm

QSB-4.5 Liter  
**Optional Standard**

4 Cylinder inline  
 4

**Fuel Tank** - Steel Twenty-five (25) gallon [94.5 liter] capacity lockable fuel tank

**Air Intake**

Intake Air Heater - preheats incoming combustion air prior to start<sup>1</sup>  
 3 - Stage Filtration, High-Efficiency Pre-Cleaner, Primary and Safety Filter

**Powertrain**

**Transmission**

Funk, DF 150 series, constant mesh spur gearing Four Speed Forward and Reverse with selectable Power shift manual or automatic with 4th or 3rd and 4th Lock-Out for Rail, Road, or Both

**Axles**

**On Road** - Two heavy duty steel axles

**On-Rail** - Two (2) outboard planetary-type rail drive axle assemblies with high strength steel cast housing, floating axles within mainframe, oscillate up to 2.6° assuring 4-wheel rail contact at all times

**On Rail** - Ring-Style Rail Wheels 27" (686 mm) heat-treated cast steel housings  
 Optional AAR & UIC Couplers and Gauges - 1,000, 1,067, 1,524, 1,600, or 1676 mm\*\*

**Differential** - Automatic no spin differential

**Transfer Case** - Heavy duty, hardened alloy steel spur gears with oil bath lubrication

**Brake System**

On-Road Machine Braking<sup>2</sup> - Hydraulic disc brakes with Dual Calipers  
 On-Rail Machine Braking<sup>2</sup> - Hydraulic disc brakes, 18" [457 mm] diameter  
 Machine Parking Brake - Spring applied, air released 14" [355.6 mm] diameter disc, driveline mounted  
 Selectable Neutral Braking - Automatically applies on machine brakes in neutral after 5 seconds of operator inactivity

**Train Air Brakes** - glad hand connections

16 CFM Engine Driven Dual piston air compressor **STANDARD**  
 100 CFM Rotary Screw air compressor **OPTIONAL**  
 In-Cab Train Air Valves

**Pneumatic System**

Air dryer for machine air system and to fill air ride seat. Heated with internal thermostatically controlled 12-Volt heater to prevent pneumatic line release valve freeze ups in damp/cold climates.

**Hydraulic**

Constant Pressure Hydraulic System, piston pump and O-ring face seal fittings and oil filtered below ISO 18/16/13  
 On-Road Machine Braking<sup>2</sup> - Hydraulic disc brakes, dual calipers  
 On-Rail Machine Braking<sup>2</sup> - Hydraulic disc brakes, 18" [457 mm] diameter

**Steering**

On Road - front axle power steering w/pivot away steering wheel

**Electrical**

H D 12 Volt DC, 160 AMP Alternator with Dual 925 CCA Batteries  
 Digital Instrumentation - SAE-J1939 CAN-Bus Control System  
 7" Digital Display for real-time machine statistics and diagnostic data  
 Camera for rear coupler with color dash mounted video monitor display  
 Additional 3 outputs for extra camera locations  
 Alarms - Automatic Backup Road-Mode Alarm, Selectable Electronic Warble-type alarm, blast type air horn, and amber strobe warning lights

**Wheels/ Tire**

On Road  
 Four (4), 16 Ply 9.00 x 20 Heavy duty Mine Service Rubber Tires  
 On Rail  
 AAR Profile Standard Gauge 56 1/2" [1,435 mm] \*\*  
 Eight (8) Individual, Air- Operated, Electronically-Controlled Sanders

**Main Frame**

Heavy duty -High strength 2" [51.0 mm] thick welded steel Main Frame with (2) 3" [76.2 mm] thick cross-members

**Body Frame**

Heavy duty all-welded construction using pre-formed steel plates and structural forms  
 Six (6) mounts between cab and body frame (deck), four (4) Lord rubber mounts between body and main frame

**Suspension**

Durable shock resistant foundation for the Body Frame, Cab, and major components

**Couplers**

Two heavy duty cast steel weight transfer design positive coupling and uncoupling with AAR contour coupler and locking knuckle  
 Optional wide traverse coupler beam for adverse and severe curve radius  
 Standard width beam handles most standard curve radius

**Automatic Shutdown**

Automatic shutdown as a result of: High Engine Temperature; Low Engine Coolant Level; High Compressor Temperature; High Hydraulic System Oil Temperature; (Optional Low Hydraulic System Oil Level)

Note<sup>1</sup> Not to be used in conjunction with Ether starting fluid.

Note<sup>2</sup> Maximum application pressure is varied automatically, depending on whether the machine is in rail or road mode. If the machine is on rail, the application pressure will vary depending on weight transferred, for best stopping capability.

TIER IV ENGINES ADD APPROXIMATELY 5" ADDITIONAL HEIGHT DUE TO HEIGHT OF EXHAUST STACK ON NEW EXHAUST SYSTEM.

\* Depending on weight package option, actual tractive effort may vary with rail and weather conditions.

\*\* Rail Gauges available in a various sizes, speak to your local dealer regarding the gauge best suited for your line.

\*\*\* For shipping purposes, add 1.5" (38 mm) to Rail height for a 2 x 4 block under wheel tread. Additional variations may occur due to options selected.

\*\*\*\*Actual speeds obtained will depend on grade, load, altitude, and other factors.

# VIKING

## VIKING STANDARD FEATURES:

- CAN-Bus Control System
- On Board Diagnostics
- UltraView 7" Color Touch Screen Display
- Video monitor display with rear back-up/ coupler camera
- Air Ride, High Back 180° Swivel Seat
- Joystick and Armrest Controls
- Neutral Braking with Programmed Throttle Control
- Automatic / Manual Power-Shift Transmission
- 16 CFM Engine Driven Air Compressor
- In-Cab Train Air Valve
- Incremental Air Brake Reducer
- Train Air Hold Button
- Wide Coupler Table
- Front and Rear Train Air Valves
- Ring Style Railwheels
- Accessible External Disc Brakes
- Impact Sensor/Recorder
- Coupler Rollers
- LED head lighting and work lighting
- GPS Positioning Capabilities\*
- Telematics Remote Monitoring & Diagnostic Capabilities\*

\*Available on specially equipped models beginning June 2016



## Customized for Optimum Efficiency

Having the right tools to do the job improves productivity. Trackmobile serves many different industries receiving materials through rail service, with each industry representing unique challenges in their daily operations. To meet these demands, we offer a wide variety of options to customize your Trackmobile to your specific needs.

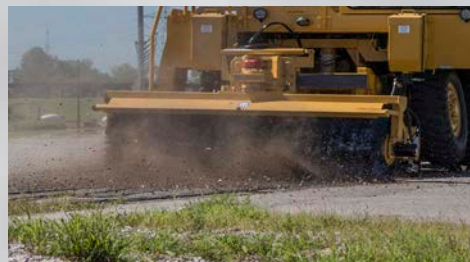
## Popular Options:

- Tier IV Final and EURO Stage IV Emissions
- Safe-T-Vue™ 360° Visibility and Railing Camera
- Radio Remote Control System with Train Air Indicator
- MAX-Tran Automatic Weight Transfer System
- MAX-Trac Automatic Traction Control System
- GCS- Ground Control System for ground crew safety
- Train Air Charge Indicator
- 100 CFM Rotary Screw Air Compressor
- Cab Extensions
- Extended Coupler Beam
- Rail Line Sight Camera
- Spark Arrestor
- Vigilance Control
- Air Conditioning
- Diesel Fired Cab Heater
- Rotary Broom
- Ballast Box
- Cab Pressurization

## Cab Extension



**Roof Mounted Spotlight**



**Rotary Broom**



**Train Air Charge Indicator**